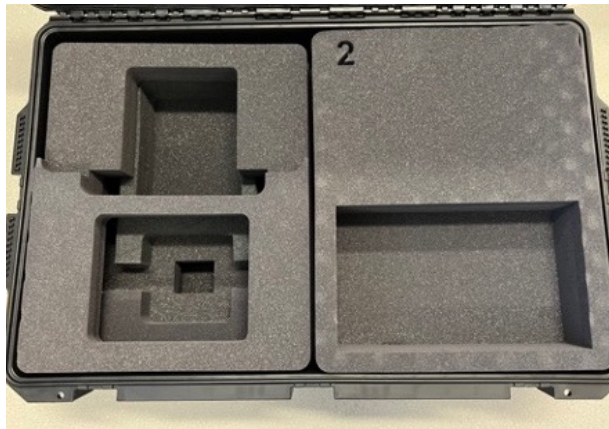


Place the case on the floor in front of the simulator. Open all five latches of the shipping case. Presse the center square and lift to open the latch. Ideally the open lid should touch the table on which the simulator is located.



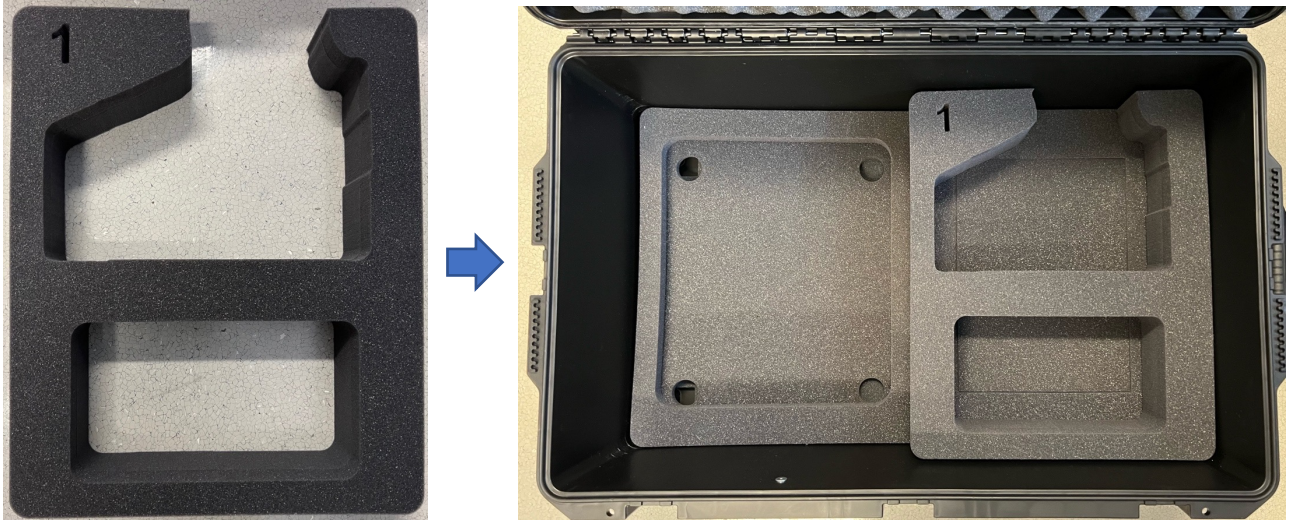
Remove all foam pieces from to the shipping case except for the bottom pieces as shown below on the right.



Place the Surface Laptop on the right section of the shipping case, then cover it with the foam cover.



Place foam #1 on right side of the shipping case.



Place the CVA anatomical block into top right cutout.

Place heat gun, power extension cord, laptop charger, USB extension cable and talc powder in bottom right cutout.



Place foam #2 on the right side of the shipping case.



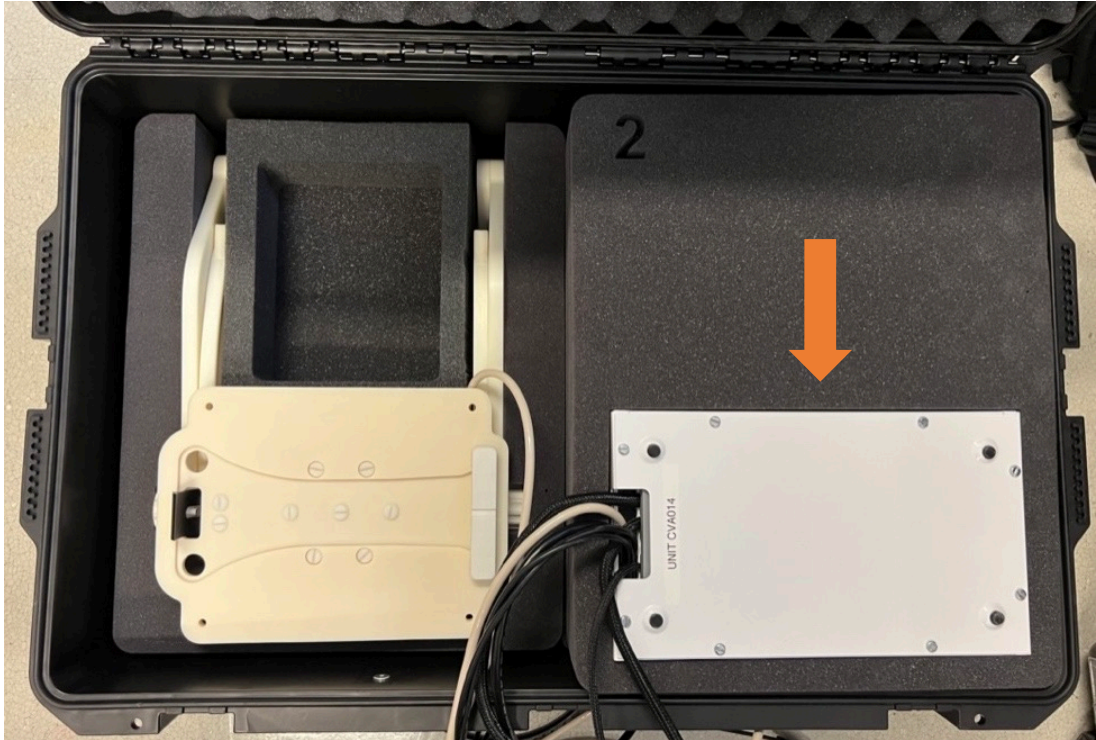
Pull latch pin and rotate the top platform to the position shown below. Loosen simulator stand knobs.  
Lift and swing the front stand legs back, then retighten knobs.



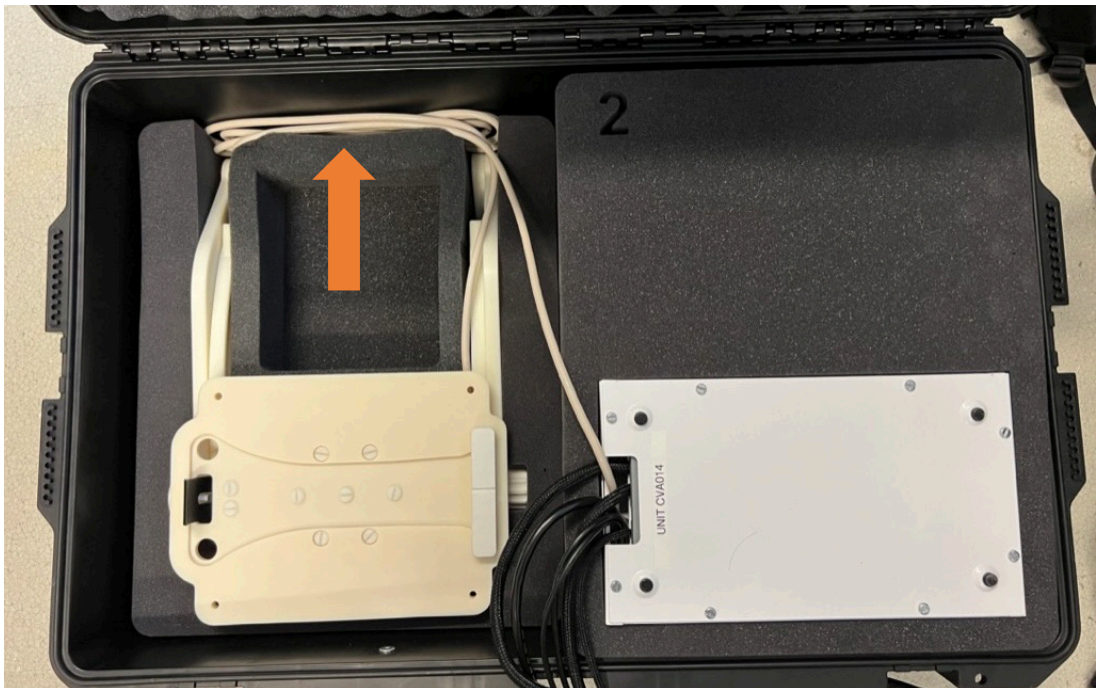
Fit stand into the foam insert #3 as shown and then on left side of the shipping case.



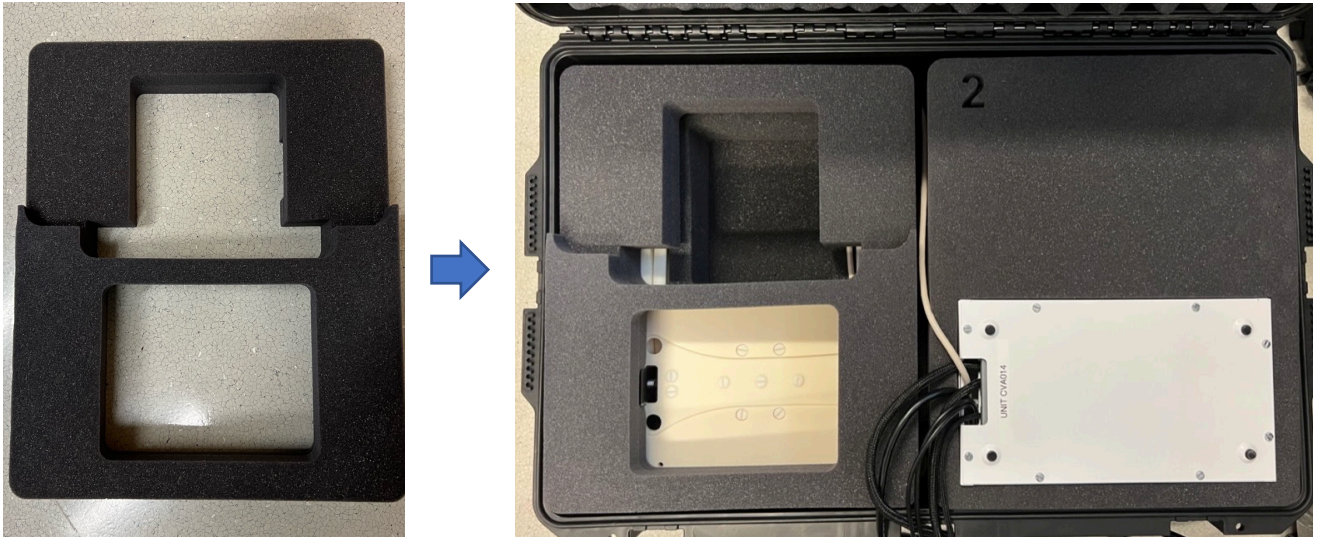
Place the tracking unit on the bottom right of shipping case, bottom facing up, cables towards left.



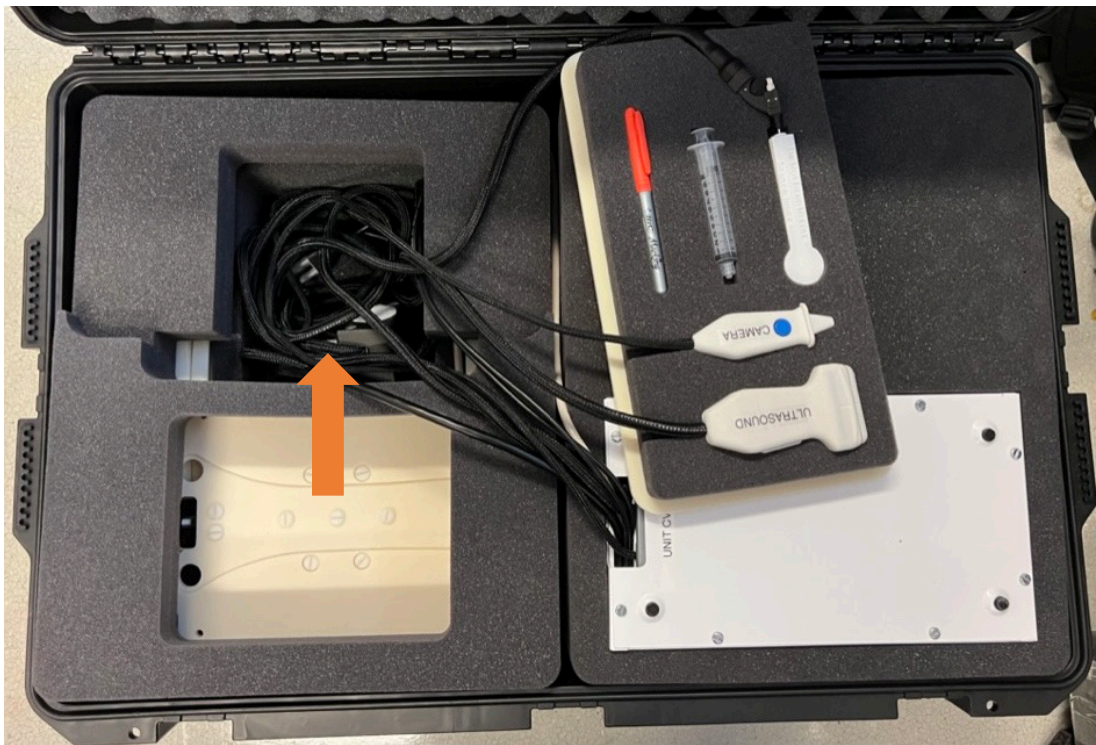
Wrap the simulator stand cord (white) back behind the foam inserts.



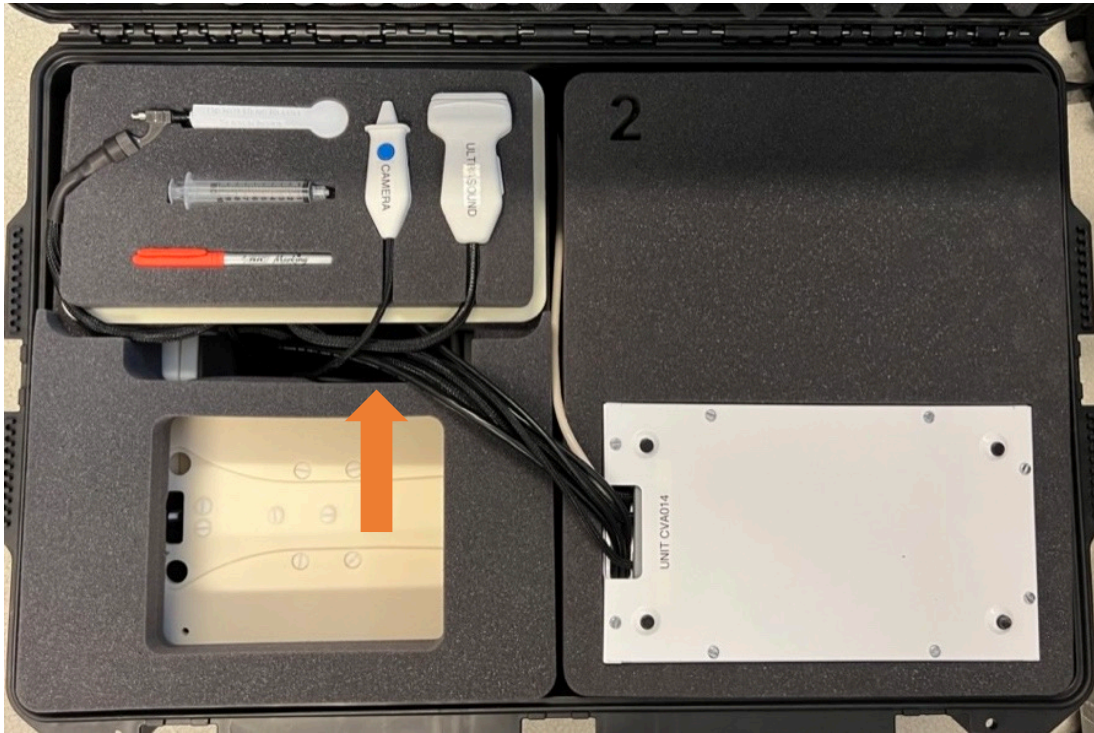
Place foam #4 on the left side of the packing case covering the simulator stand.



Coil excess tool cord length in the space above the simulator stand.



Place the tool tray on the top left of the shipping case.  
Organize the cables so they go into the cutout below the tool tray.



Close and latch the shipping case, be sure that the needle cable does not get pinched when the lid is closed.



For more information and Instruction videos, please visit  
<https://simulation.health.ufl.edu/services-support/>