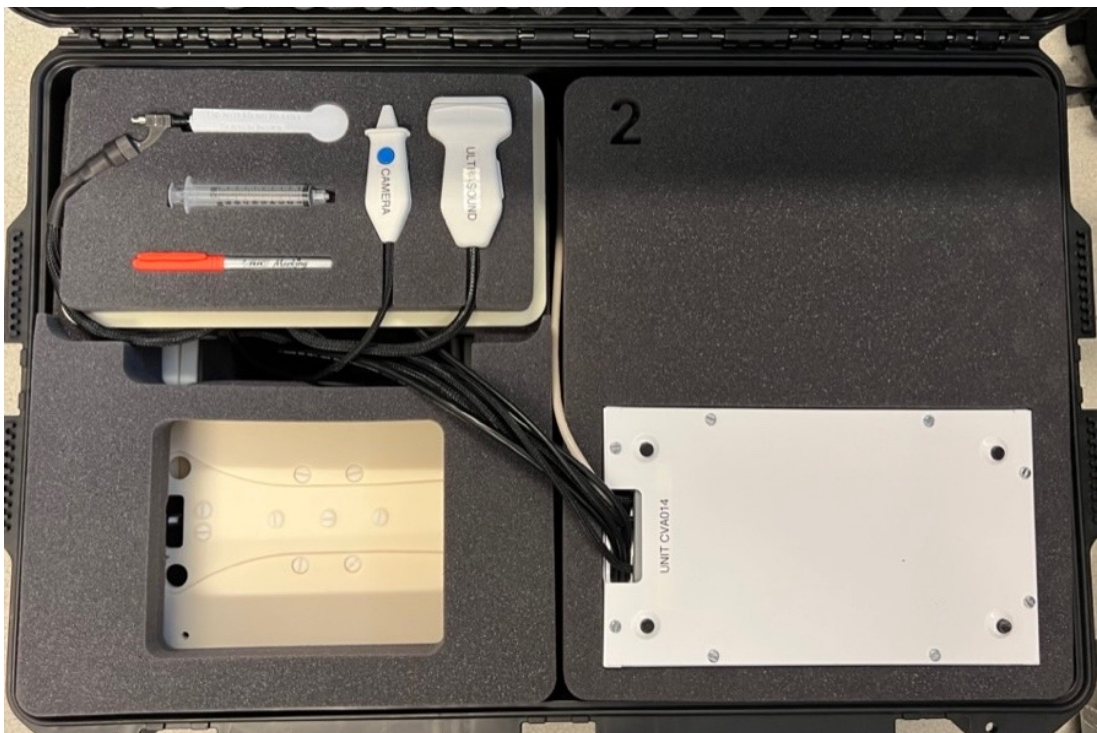


Open all five latches of the shipping case. Press the center square and lift to open the latch.



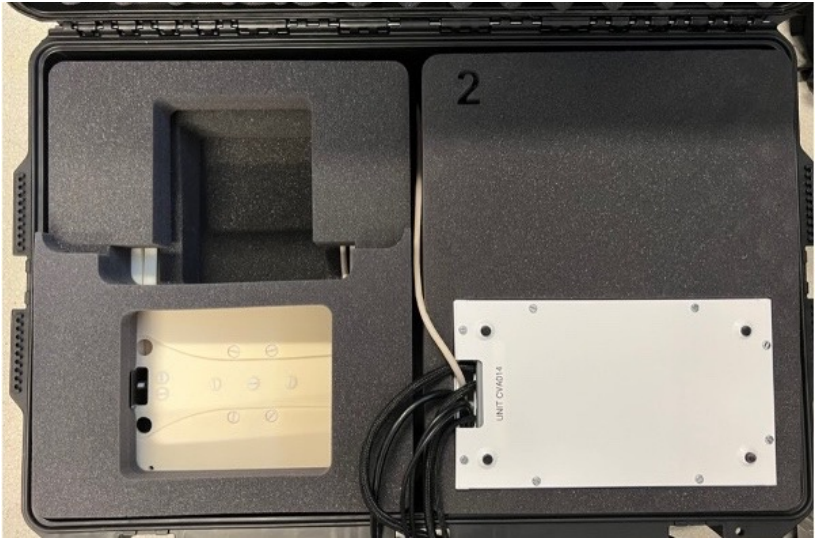
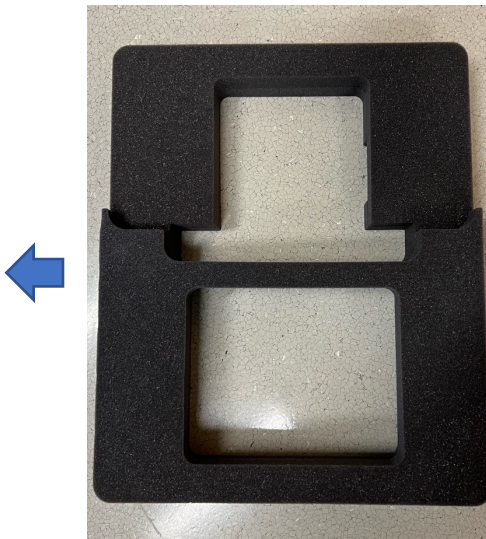
This is top view of the contents inside.



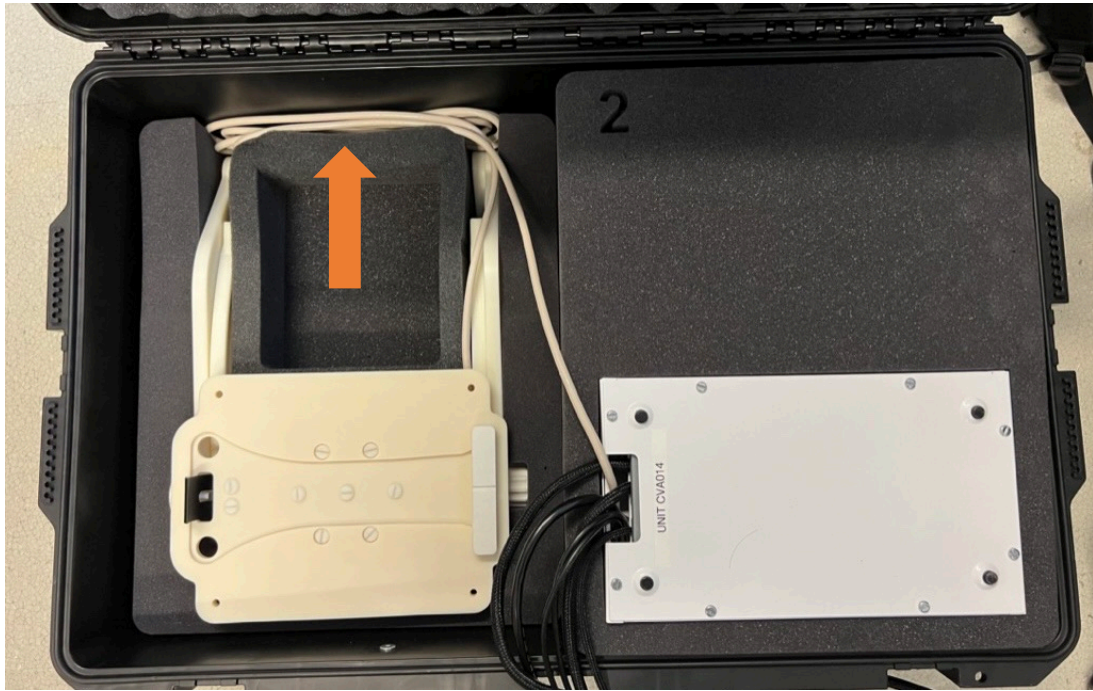
Move the transport case close to the location on a table where you will set up the simulator. The lid touch the table or is very close when the case is open.  
Remove the tool tray and uncoil tool cords from the space shown below.



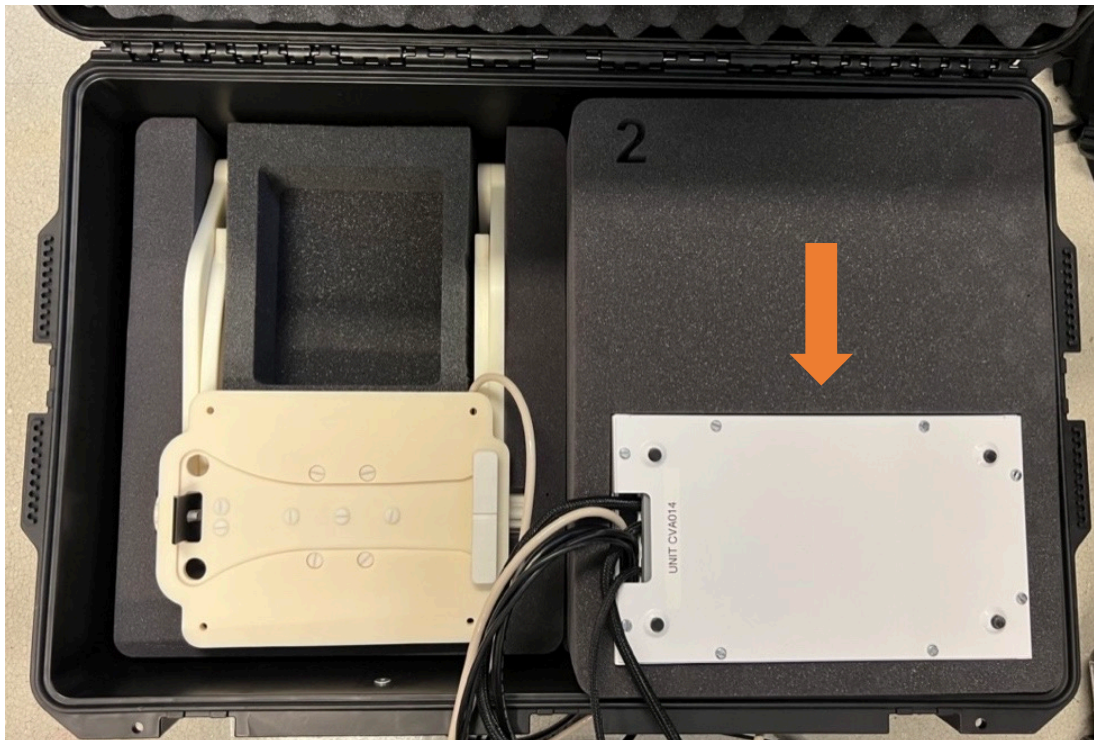
Remove the foam (#4) on the left side of the packing case covering the simulator stand.



Unwrap the simulator stand cord (white) back behind the foam inserts.



Take out the tracking unit on the bottom right of shipping case, note that the bottom of the unit is facing up in the case. Place tracking unit upright on table.



Remove the stand together with the foam insert (#3) on left side of the shipping case.



Remove foam from the stand and place stand on table. Loosen simulator stand knobs. Lift and swing the front stand legs to fit into the cutouts on the base, adjust the top platform to the desired angle and retighten the knobs.



Velcro and cable ties on the base of stand are to prevent the tools from accidentally hitting the floor.



To rotate the top platform, pull the latch pin outwards and then rotate. Friction when rotating is normal, it is easier to use both hands holding opposite side of the platform to rotate. The latch is to prevent unwanted movement.

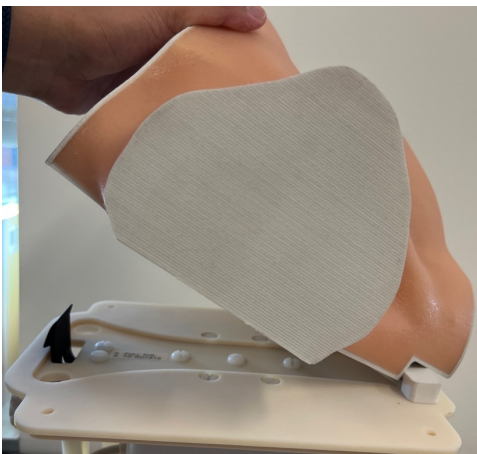
Remove foam layer #2 from right side of the shipping case.



Remove heat gun, power extension cord, laptop charger, USB extension cable and talc powder from bottom right cutout.  
Remove the CVA anatomical block from top right cutout.



Install the anatomical block onto the stand top platform. Ensure the black lock snaps in to hold the block firmly in position. Push the snap lock sideways to release the block from stand.



Remove foam #1 from right side of the shipping case.



Remove the laptop foam cover. Take out the Surface Laptop on the right section of the shipping case.



Put all foam pieces back to the empty shipping case for storage and future packing. Do not throw them away!



For more information and Instruction videos, please visit  
<https://simulation.health.ufl.edu/services-support/>