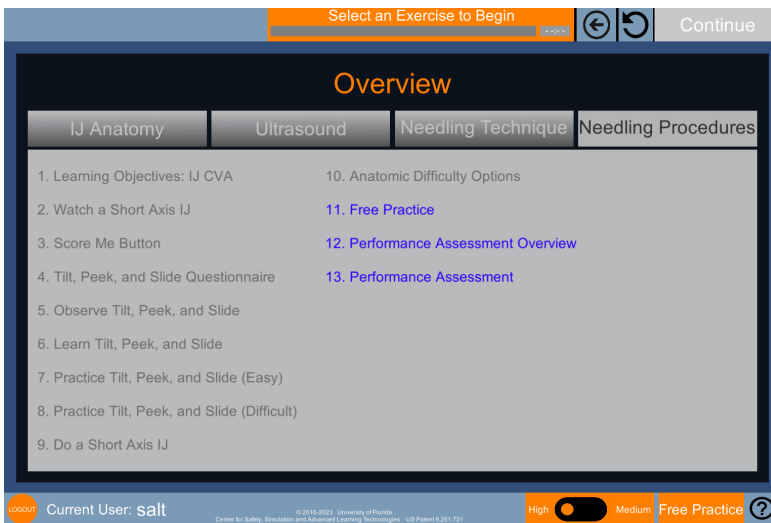
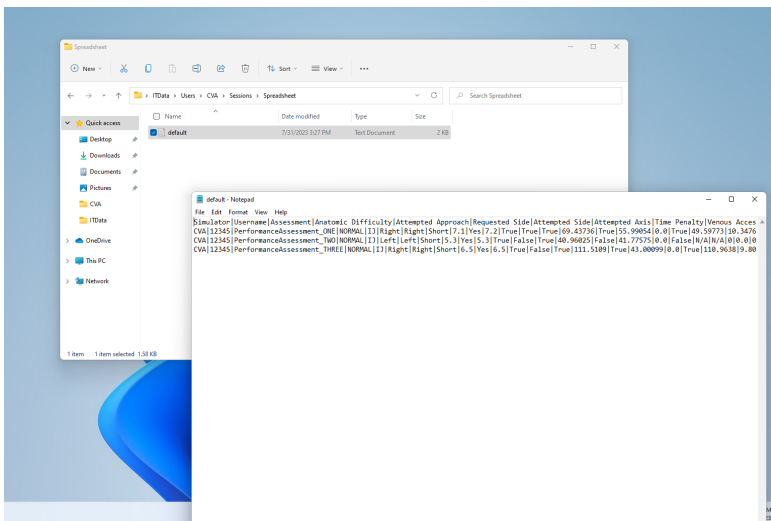


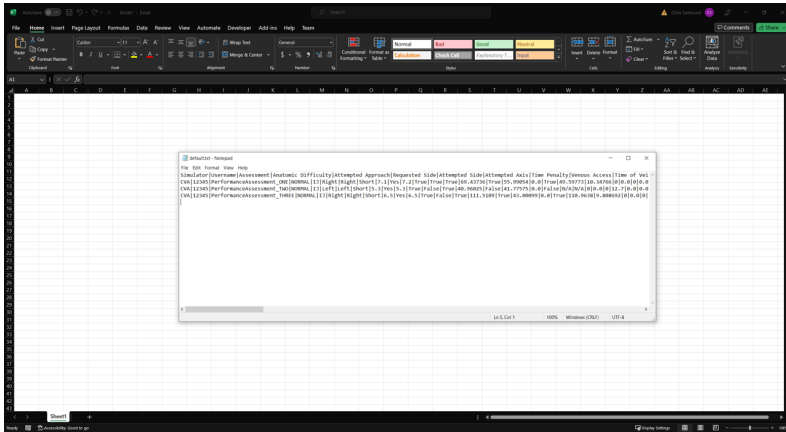
1. The post-assessment exercise can be accessed, and data can be acquired with any ID, first, and last name.



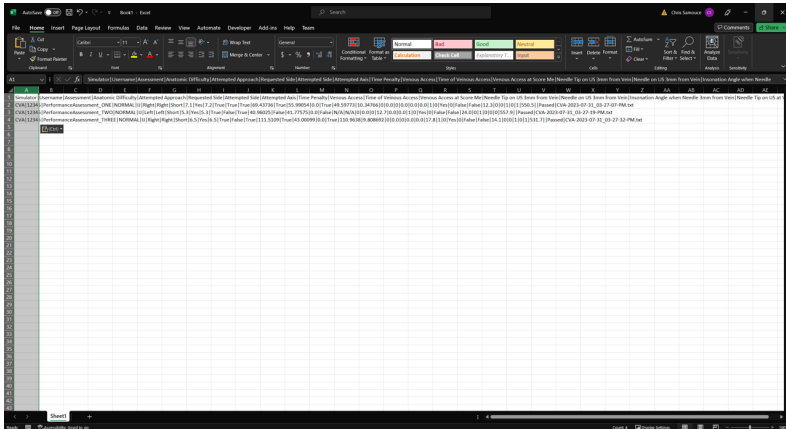
2. After logging in click the needling procedures tab to find the performance assessment.



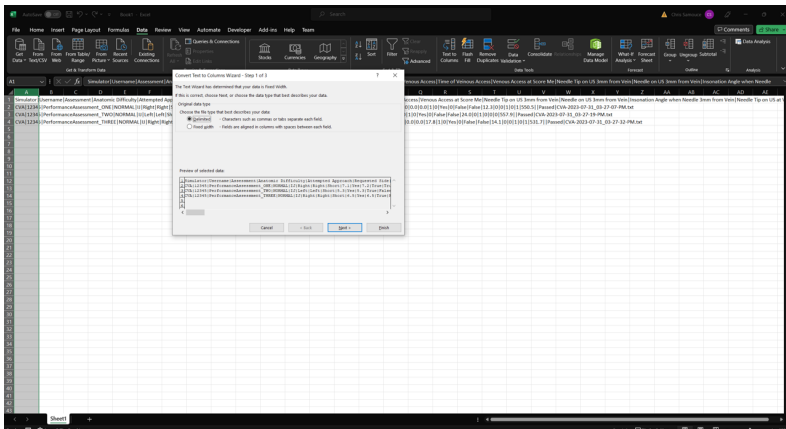
3. After finishing the performance assessment, find all of the collected data in: ITData > Users > CVA > Sessions > Spreadsheet > default.txt. Copy this file and bring it over to a computer that has Microsoft Excel.



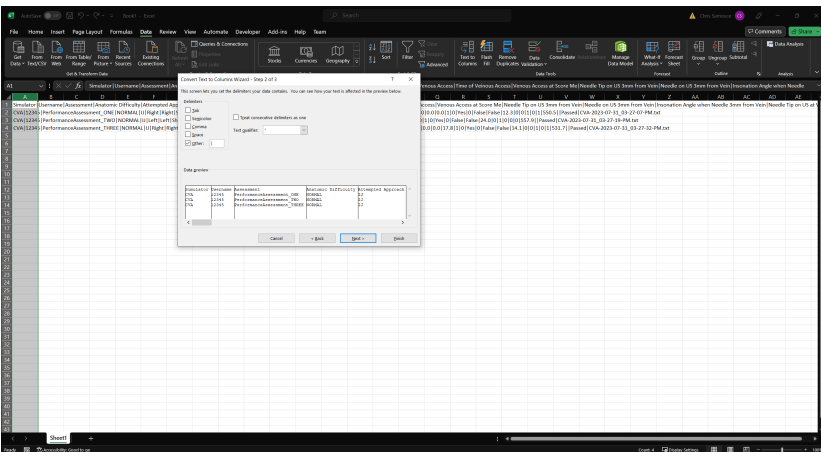
4. Open up the default.txt file along with Microsoft Excel.



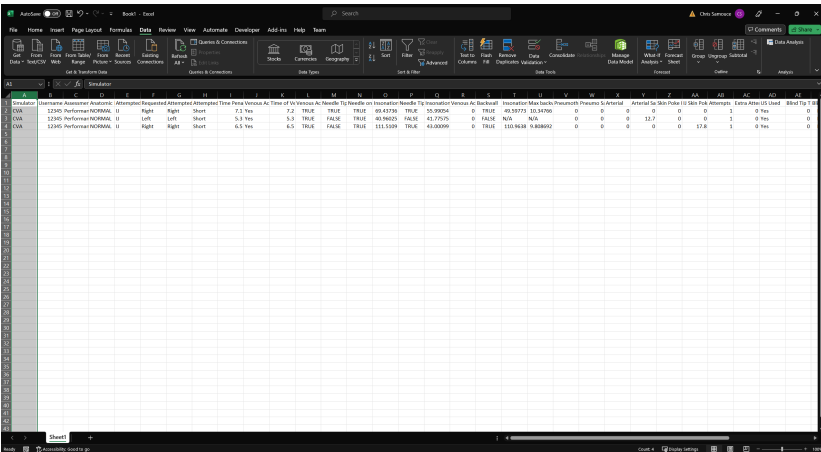
5. Paste the data in column 1, row 1 and highlight the first column.



6. Click Data > Text to Columns. Choose Delimited and click Next.



7. In the delimiters box choose “Other” and type a vertical line ‘|’ (located above Enter on keyboard). Click “Finish”.



8. The data is now properly split across columns and can be analyzed.